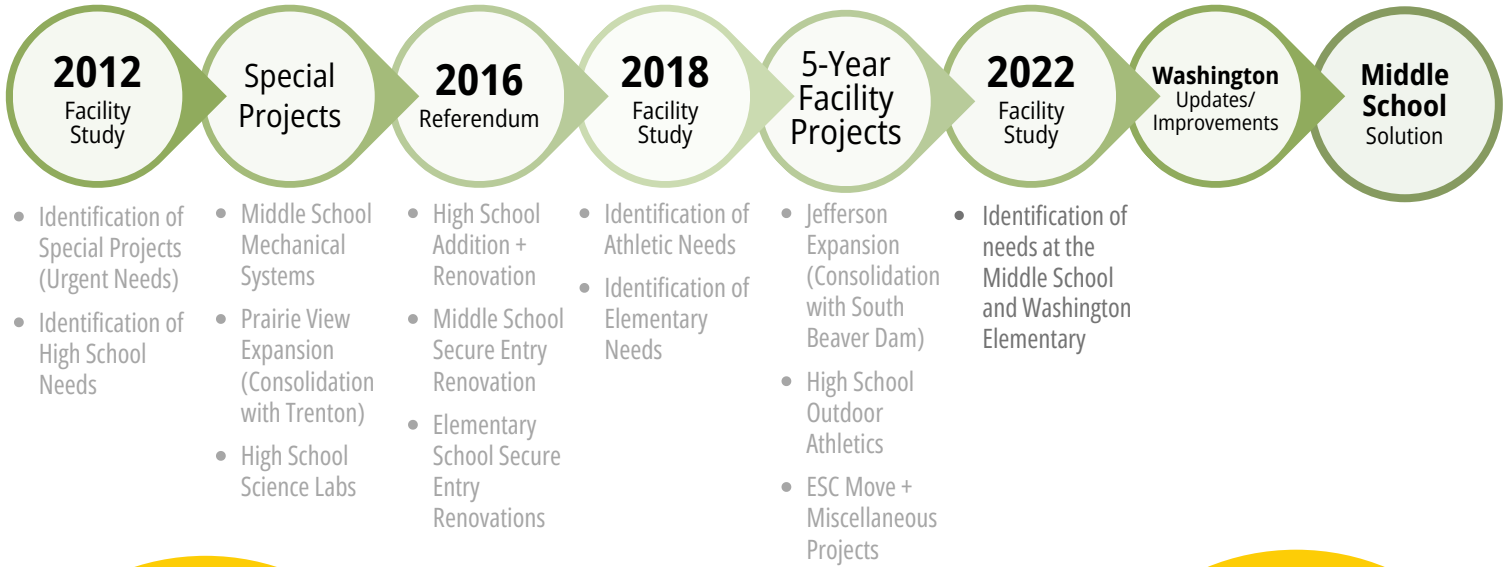




BEAVER DAM UNIFIED SCHOOL DISTRICT FACILITIES PLANNING

LONG-TERM DISTRICT FACILITIES PLANNING



COMMUNITY SURVEY

The Beaver Dam Unified School District conducted a community-wide survey in April 2024 to gather input on the district's facilities planning process. A total of 1,876 surveys were completed, 64% of all respondents supported the district pursuing a facilities referendum and 51.3% of survey respondents support a \$107M referendum to fund the recommended plan.



MASTER PLANNING TIMELINE

WINTER 2023			SPRING 2023			SUMMER 2023			FALL 2023			
DEC	JAN	FEB	MAR	APR	MAY	JUN	JUL	AUG	SEPT	OCT	NOV	
				Engage District Leadership Team	Approve CM Selection 5/8	Verification of Facilities Assessment	Solutions & Budget Development					
				Engage Financial Partner								
						Engage Community						
WINTER 2024			SPRING 2024			SUMMER 2024			FALL 2024			
DEC	JAN	FEB	MAR	APR	MAY	JUN	JUL	AUG	SEPT	OCT	NOV	
Solutions & Budget Development						Scope Refinement	Adopt Potential Referendum Question					
		Survey Development	Survey Process		Report Survey Results			8/12 Final Resolution Approved by BoE	Public Information Campaign		11/5 Fall Election Day	
Engage Community												

BEAVER DAM MIDDLE SCHOOL | HISTORY



BUILT: **1922** (as A High School)

ADDITIONS: **1964, 1977, 1989, 1997**

EMERGENCY REPAIRS: **2013, 2019**

SITE SIZE: **5 ACRES** (3.5 contiguous ~ 1.8 acres occupied by building)

STUDENT POPULATION: **700 +/-**

GRADES SERVED: **6 - 8**

BEAVER DAM MIDDLE SCHOOL EDUCATIONAL ADEQUACY | PROGRAM

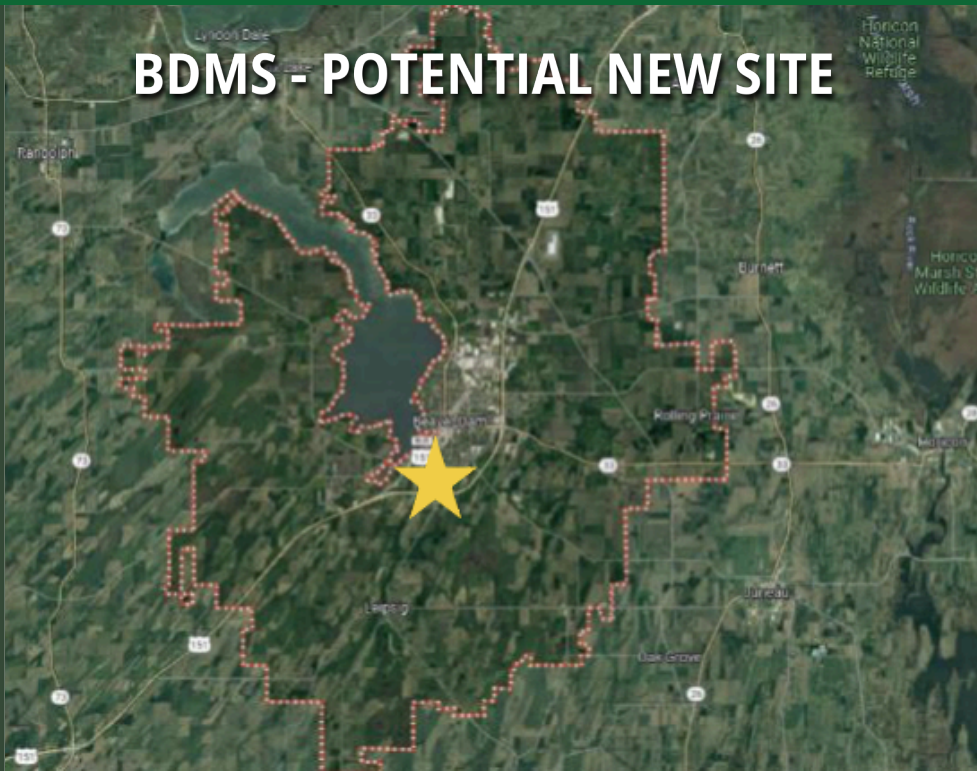
SPACE	EXISTING AVERAGE	EXISTING RANGE	PROPOSED STANDARD
Core Classrooms	797 SF	676 – 1,152 SF	1,050 SF
Science Labs*	1,341 SF	1,299 – 1,359 SF	1,300 SF *
Art Rooms	837 SF	685 – 990 SF	1,500 SF
Music Rooms	1,000 – 2,200 SF		1,200-2,800 SF
STEM	769 SF	765 – 773 SF	1,500 SF
Athletic Spaces (Gymnasium)	11,489 SF (dedicated space)		13,200 SF
Tech Ed / Agriculture**	2,430 SF		7,000 SF ***
Library / IMC	5,691 SF		4,450 SF
Main Office + Student Services Suite	3,600 SF		4,000 SF +
Special Education (dedicated space)	5,000 SF		4,100 SF
Student Commons (w/o Kitchen)	7,310 SF (shared / MP space)		7,800 SF
Site Size	5.4 ACRES		27 ACRES



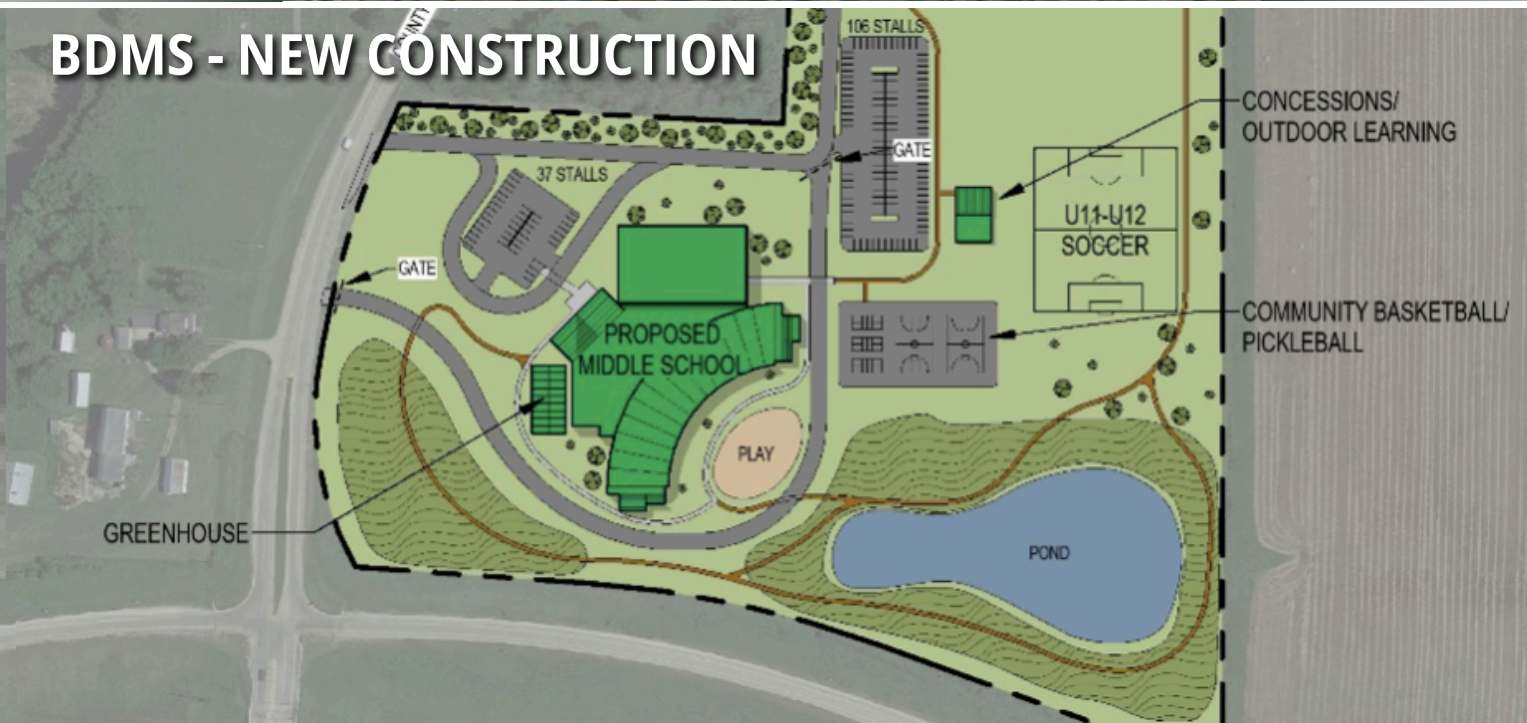
*CURRENT BUILDING IS LESS 2 LABS (4 EXISTING, 6 SUGGESTED)
**CURRENT BUILDING ONLY HAS WOOD SHOP, NO AGRICULTURE



BDMS - POTENTIAL NEW SITE



BDMS - NEW CONSTRUCTION



BDMS - CAPITAL PROJECT COST RECAP

- **BASIC CAPITAL IMPROVEMENTS: ~\$20 MILLION**
(does not address instructional spaces or campus/site challenges)
- **COMPREHENSIVE RENOVATION: ~\$71.6 MILLION**
(does address instructional spaces, but does not improve the campus/site realities)
- **NEW MIDDLE SCHOOL: ~\$87 MILLION**
(address instructional spaces and campus/site challenges)



WASHINGTON ELEMENTARY SCHOOL | HISTORY



BUILT: 1949

ADDITIONS: 1959, 1997

SITE SIZE: 6.3 ACRES

STUDENT POPULATION:

- **200+/-** (Currently at Washington)
- **100+/-** (Currently at Wilson)

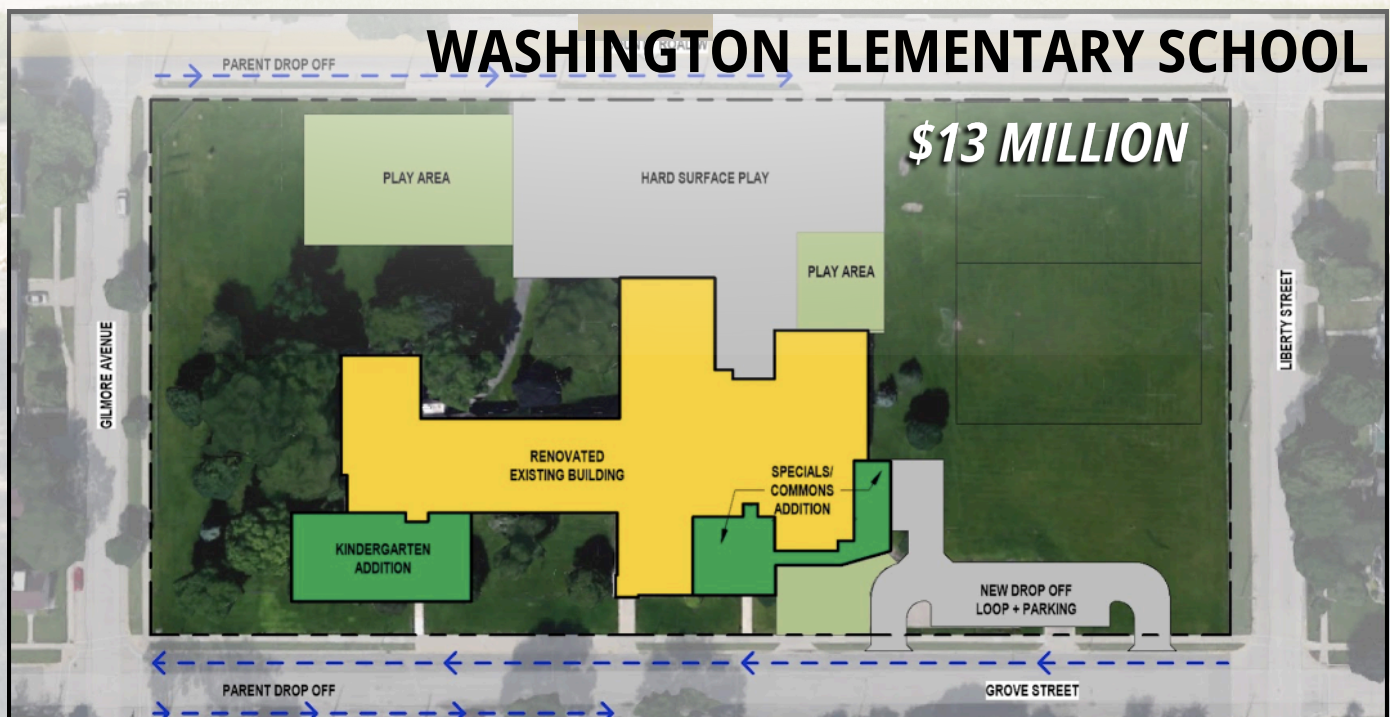
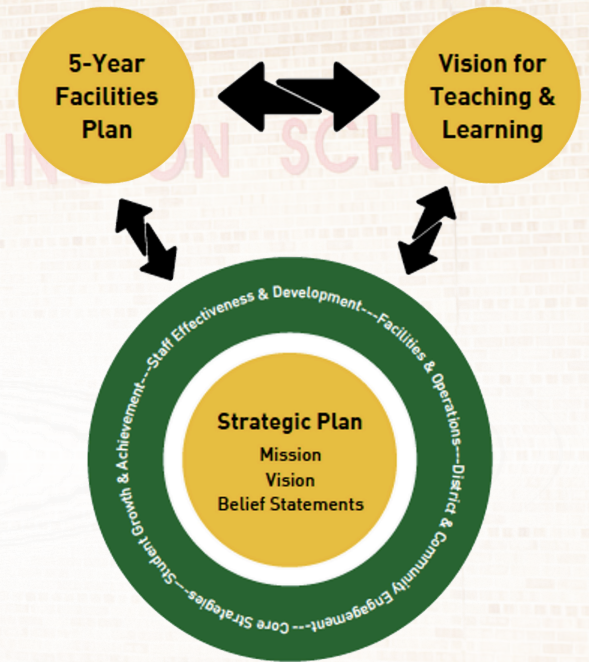
GRADES SERVED: K-5

WASHINGTON | FUTURE

As part of the BDUSD Facilities Plan, the District is committed to a 3-section elementary school at Washington Elementary School with the addition of Wilson Elementary School students.

- **FALL 2024:** Grades K-5 Wilson Elementary School students start at Washington Elementary School
- **SUMMER 2025:** Phase I Construction at Washington Elementary School
- **FALL 2025:** All Wilson Elementary School students start at Washington Elementary School
- **SUMMER 2026/BEYOND:** Opportunity for Washington Elementary School Phase II with Community support

For more information, please visit <https://bit.ly/3TyIzYT>.



DISTRICT-WIDE IMPROVEMENTS

- Playground Improvements
- Drop-off / Pick-up Improvements
- Site Safety (Circulation + Fencing)
- Community Recreation
- ADA Access



\$7 MILLION



DISTRICT FACILITIES PLANNING

- Supporting our next generation of students and teachers.
- Addressing urgent capital needs throughout our district.
- Identifying the best solution for our 100+ year-old Middle School.
- Investing in the future of Washington Elementary School, built in 1949.
- Improving site safety, accessibility, playgrounds, and community spaces throughout our district.



QUESTIONS?

For more Information, contact:
Superintendent, Mark DiStefano, distefanom@bdusd.org

Stay Informed

